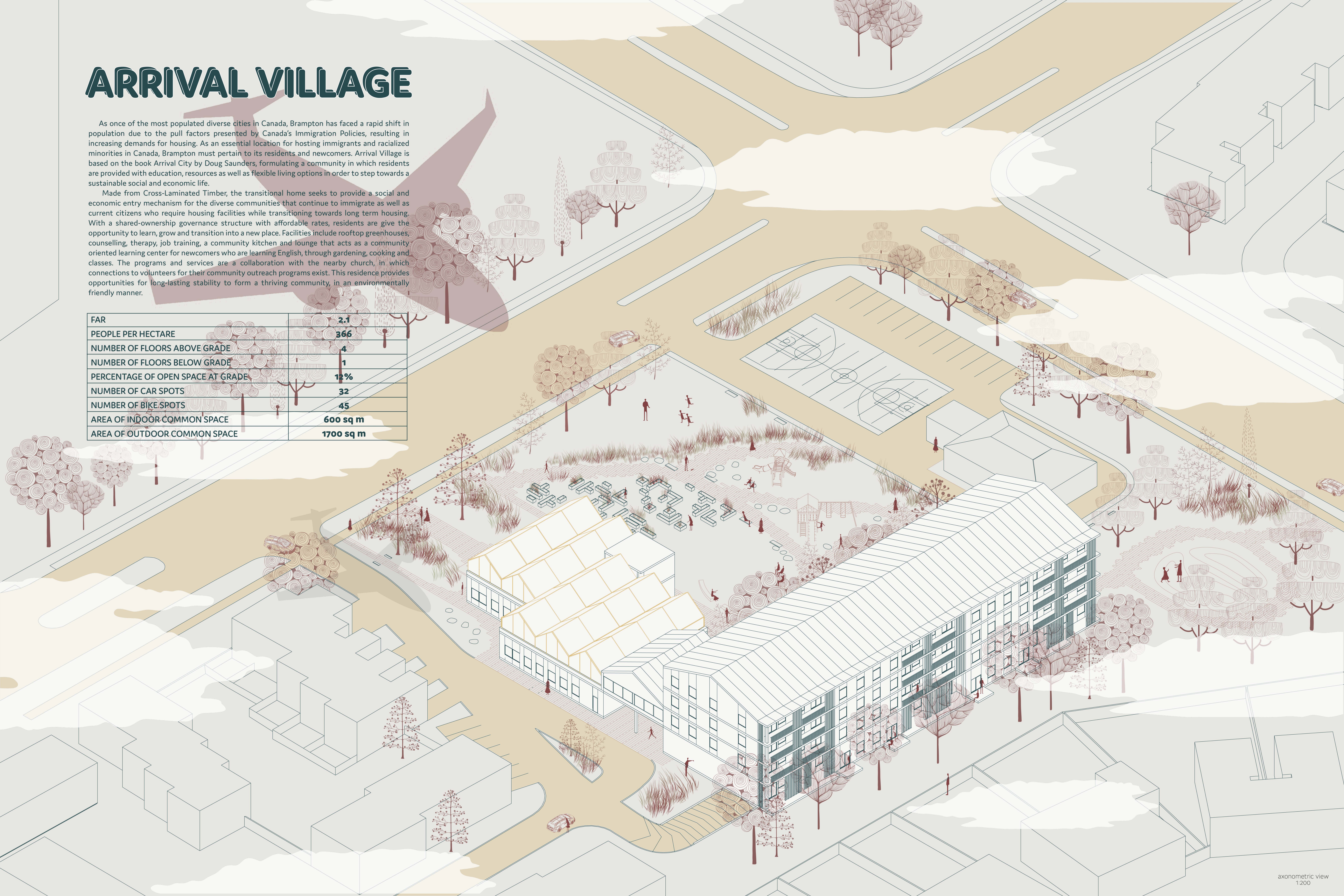


ARRIVAL VILLAGE

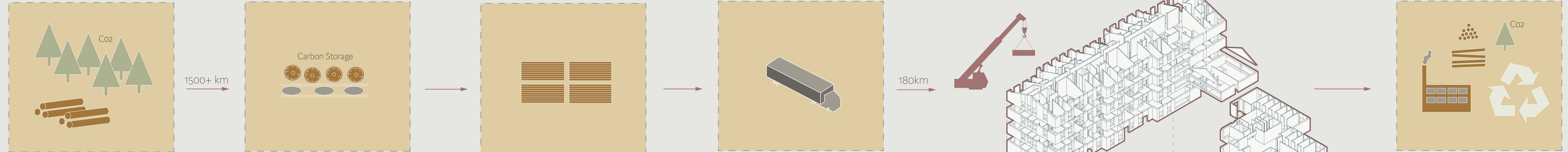
As once of the most populated diverse cities in Canada, Brampton has faced a rapid shift in population due to the pull factors presented by Canada's Immigration Policies, resulting in increasing demands for housing. As an essential location for hosting immigrants and racialized minorities in Canada, Brampton must pertain to its residents and newcomers. Arrival Village is based on the book Arrival City by Doug Saunders, formulating a community in which residents are provided with education, resources as well as flexible living options in order to step towards a sustainable social and economic life.

Made from Cross-Laminated Timber, the transitional home seeks to provide a social and economic entry mechanism for the diverse communities that continue to immigrate as well as current citizens who require housing facilities while transitioning towards long term housing. With a shared-ownership governance structure with affordable rates, residents are given the opportunity to learn, grow and transition into a new place. Facilities include rooftop greenhouses, counselling, therapy, job training, a community kitchen and lounge that acts as a community oriented learning center for newcomers who are learning English, through gardening, cooking and classes. The programs and services are a collaboration with the nearby church, in which connections to volunteers for their community outreach programs exist. This residence provides opportunities for long-lasting stability to form a thriving community, in an environmentally friendly manner.

FAR	2.1
PEOPLE PER HECTARE	366
NUMBER OF FLOORS ABOVE GRADE	4
NUMBER OF FLOORS BELOW GRADE	1
PERCENTAGE OF OPEN SPACE AT GRADE	12%
NUMBER OF CAR SPOTS	32
NUMBER OF BIKE SPOTS	45
AREA OF INDOOR COMMON SPACE	600 sq m
AREA OF OUTDOOR COMMON SPACE	1700 sq m



lifecycle diagram



Sustainably-sourced lumber is harvested from hardwood forest in Northern Ontario

Elements manufactures CLT, glulam and other mass timber components in St. Thomas factory within Southern Ontario

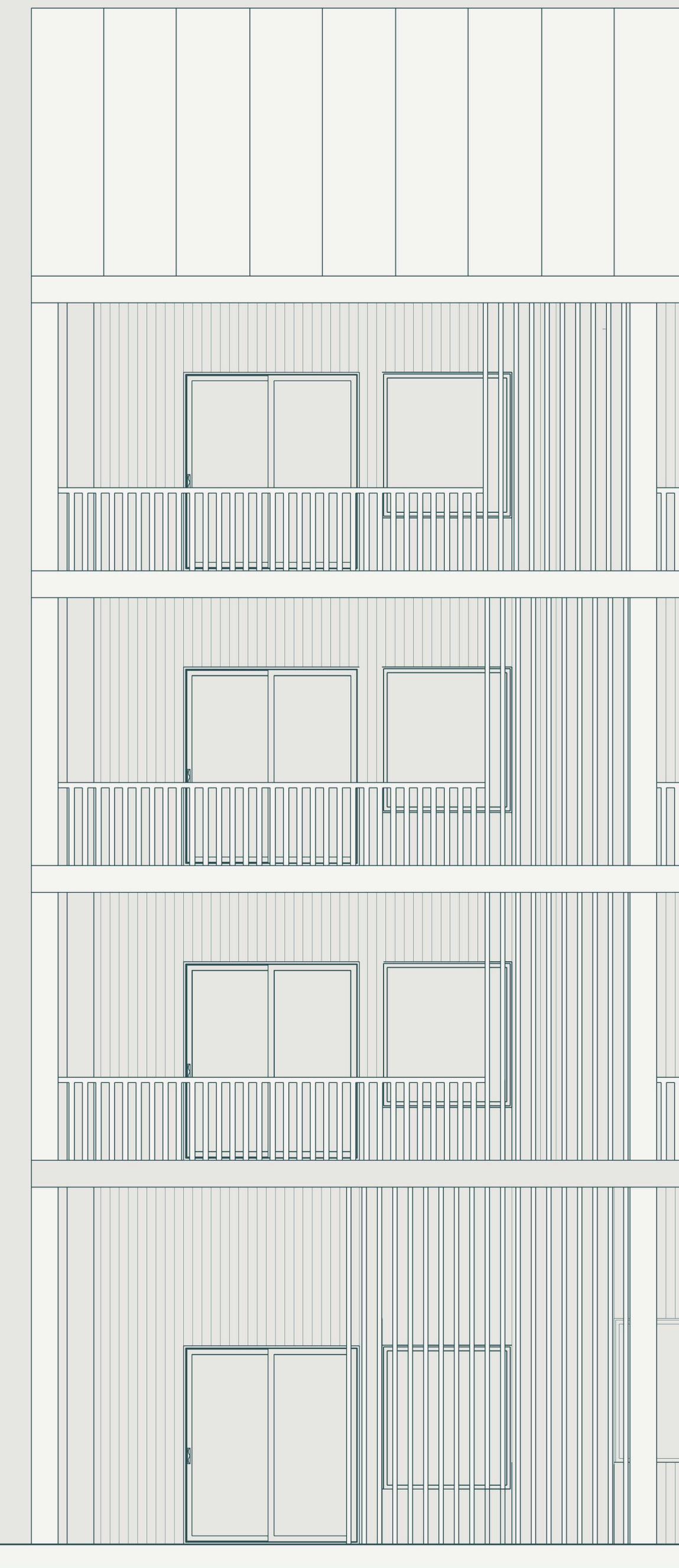
Wood turns into products and materials, notably panels up to 3.5m wide

Material made off-site at Elements are loaded onto a truck and transported to Clark Boulevard

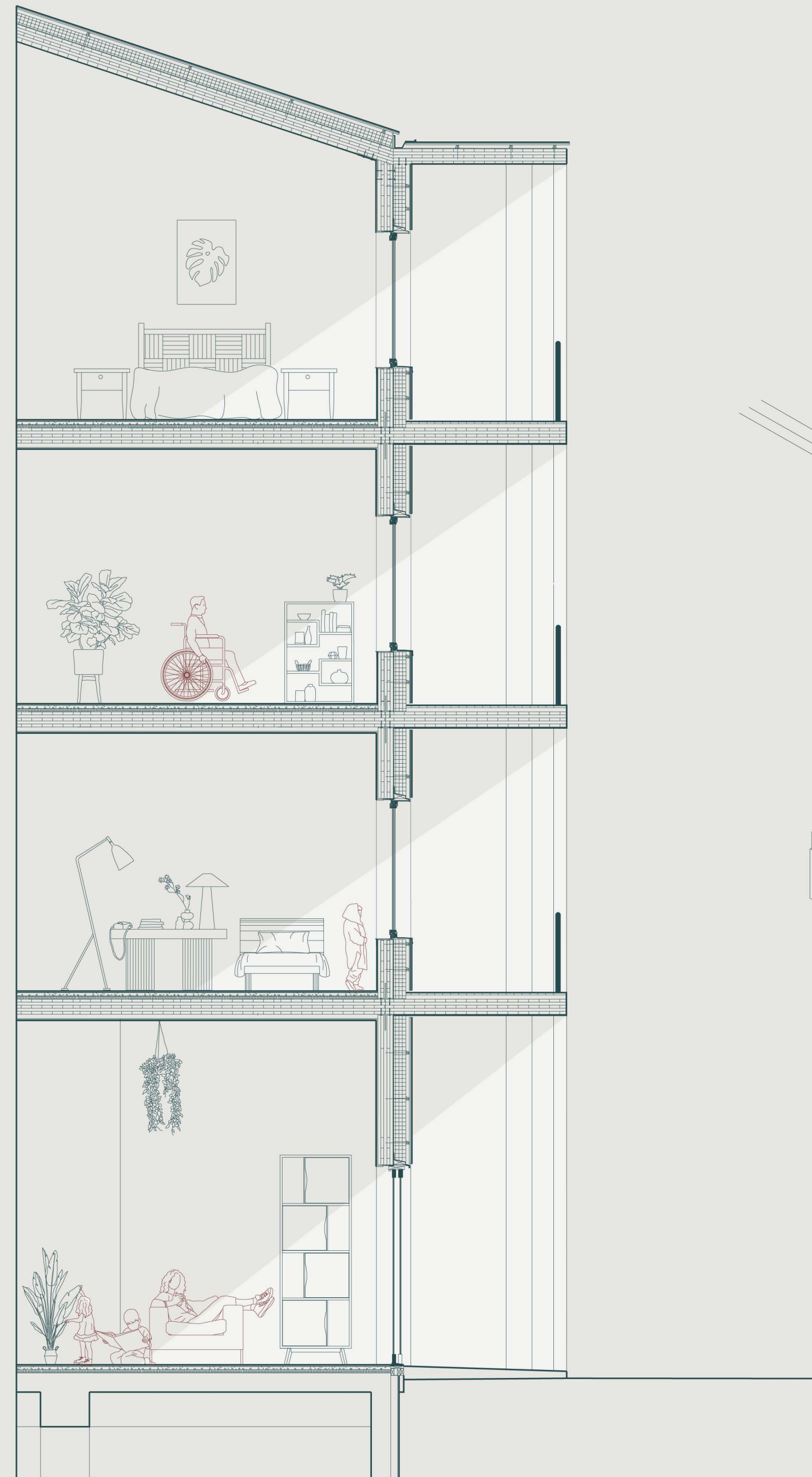
Materials as well as air, water, thermal and structural components are lifted and assembled on site using a crane

At the end of the life cycle, materials decay or are recycled as bioenergy, releasing stored Co2 for trees to absorb

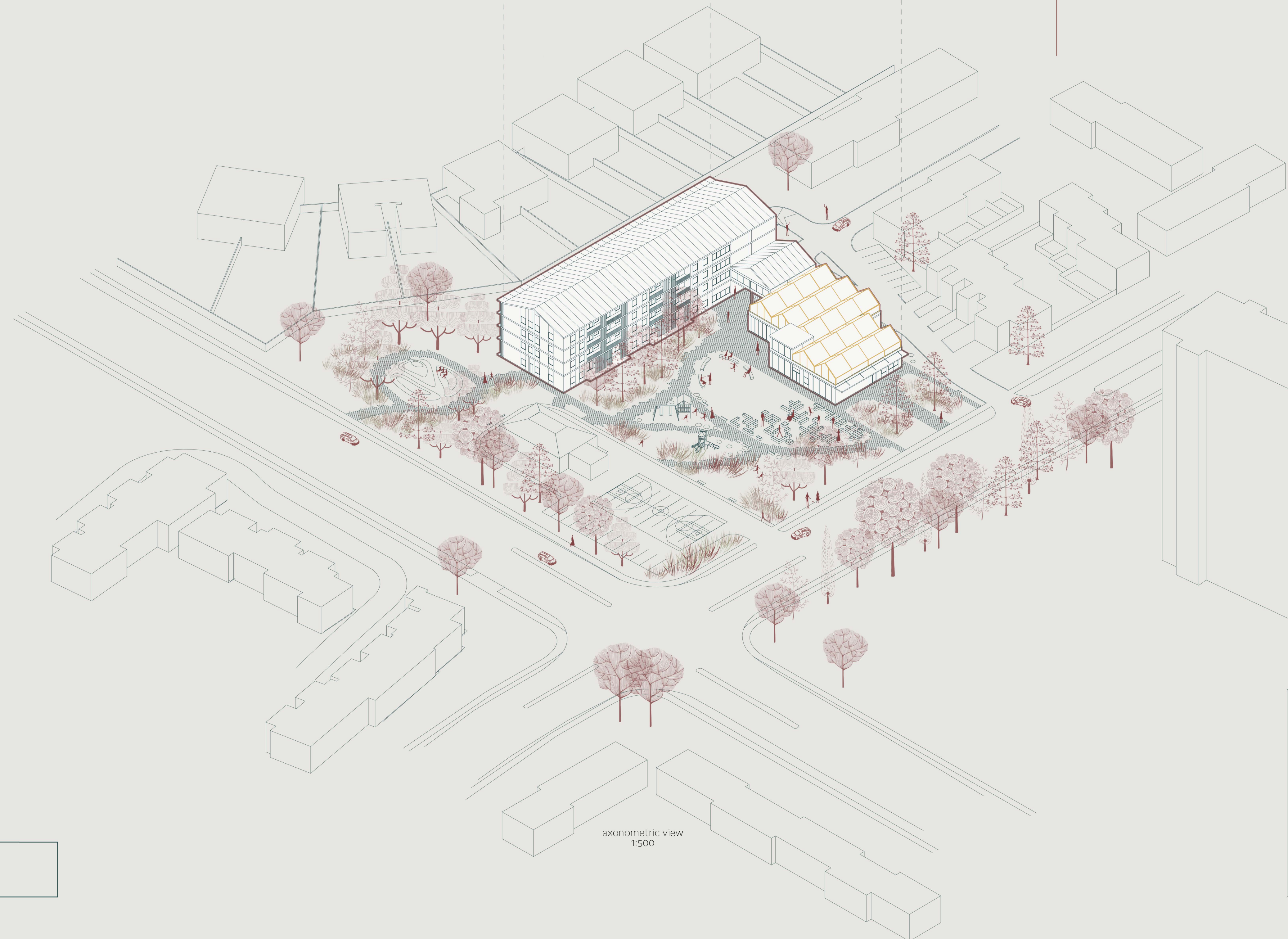
Sources
<https://elementfive.co/content/uploads/2021/09/ES-Introduction.pdf>
<https://www.woodcampus.co.uk/wp-content/uploads/2019/05/Swedish-Wood-CLT-Handbook.pdf>



detailed elevation
1:50

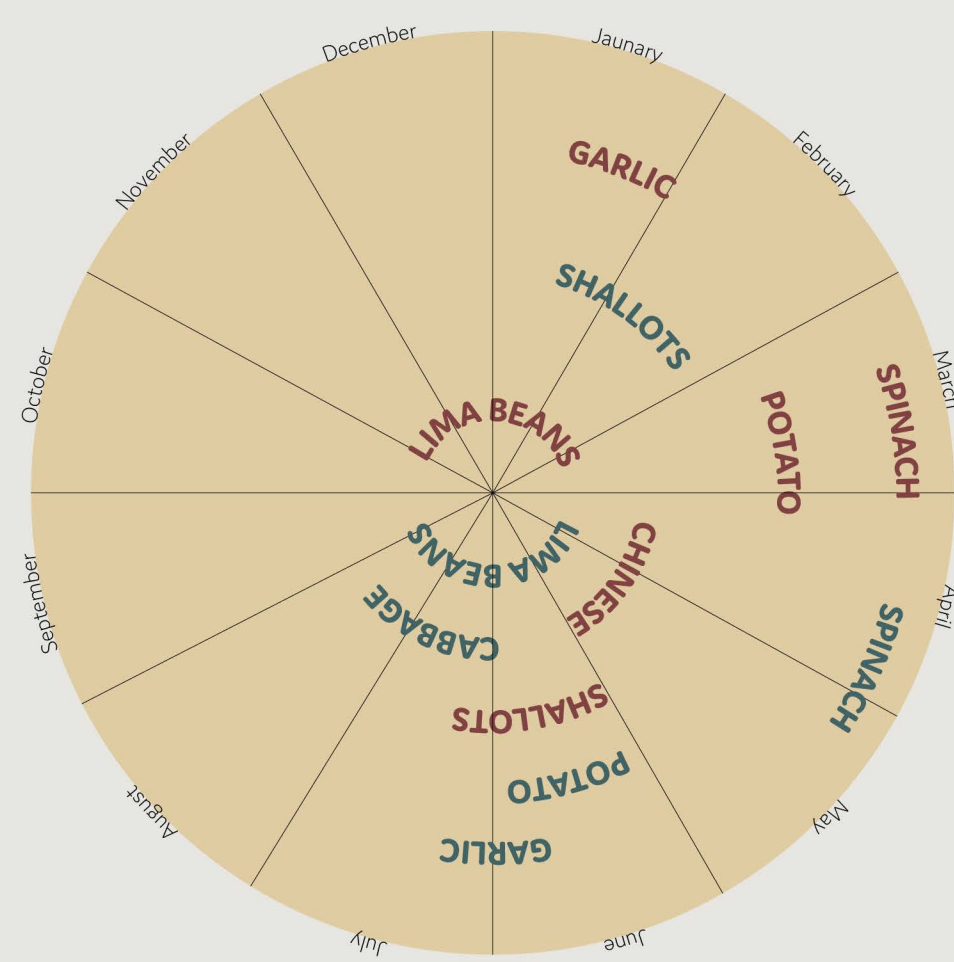


detailed section
1:50



axonometric view
1:500

EXTERIOR PLANTING STRATEGY
(approximations based on research)



**SOW
HARVEST**

ENGLISH

spinach
garlic
potatos
shallots
chinese cabbage
lima beans

Top 2 languages spoken in Brampton

PUNJABI

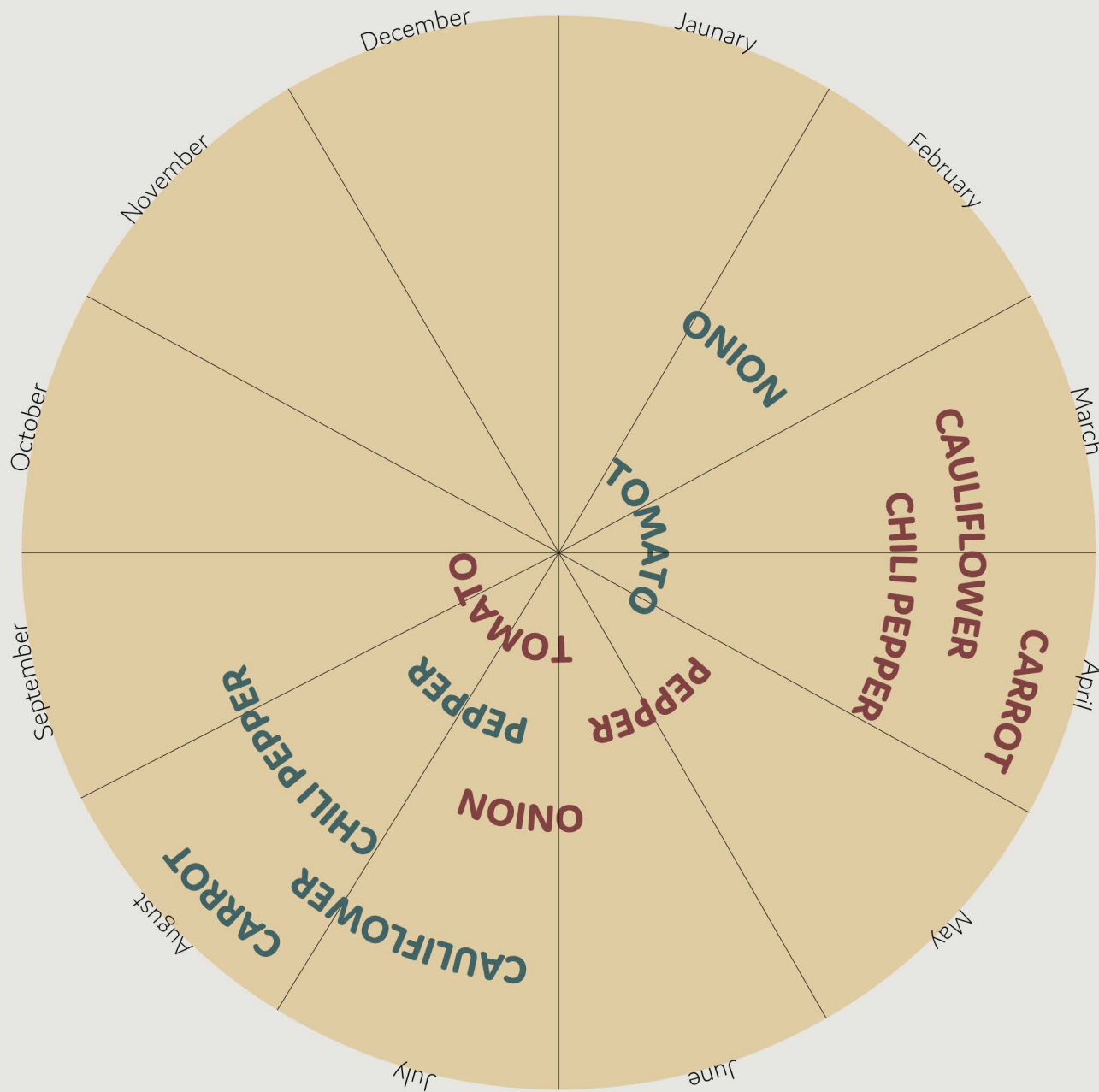
ਪਾਲਕ
ਲਸਣ
ਆਲੂ
ਸੋਲੇਟਸ
ਚੀਨੀ ਗੋਭੀ
ਲੀਮਾ ਬੀਨਜ਼

URDU

کلاپ
نسل
ول
سٹولاش
یہب وگ ینیچ
رایلھپ امیل



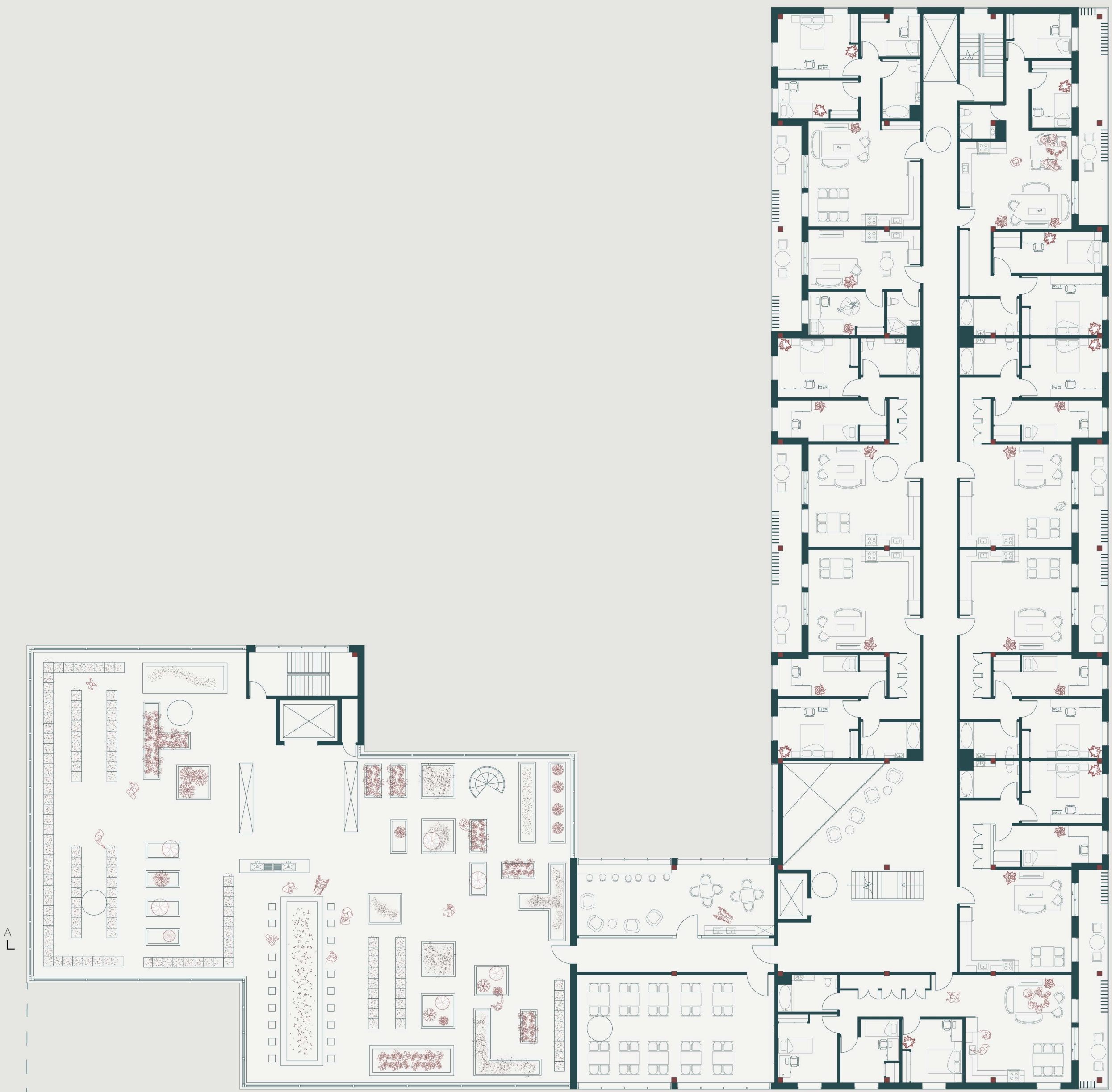
INTERIOR PLANTING STRATEGY
(approximations based on research)



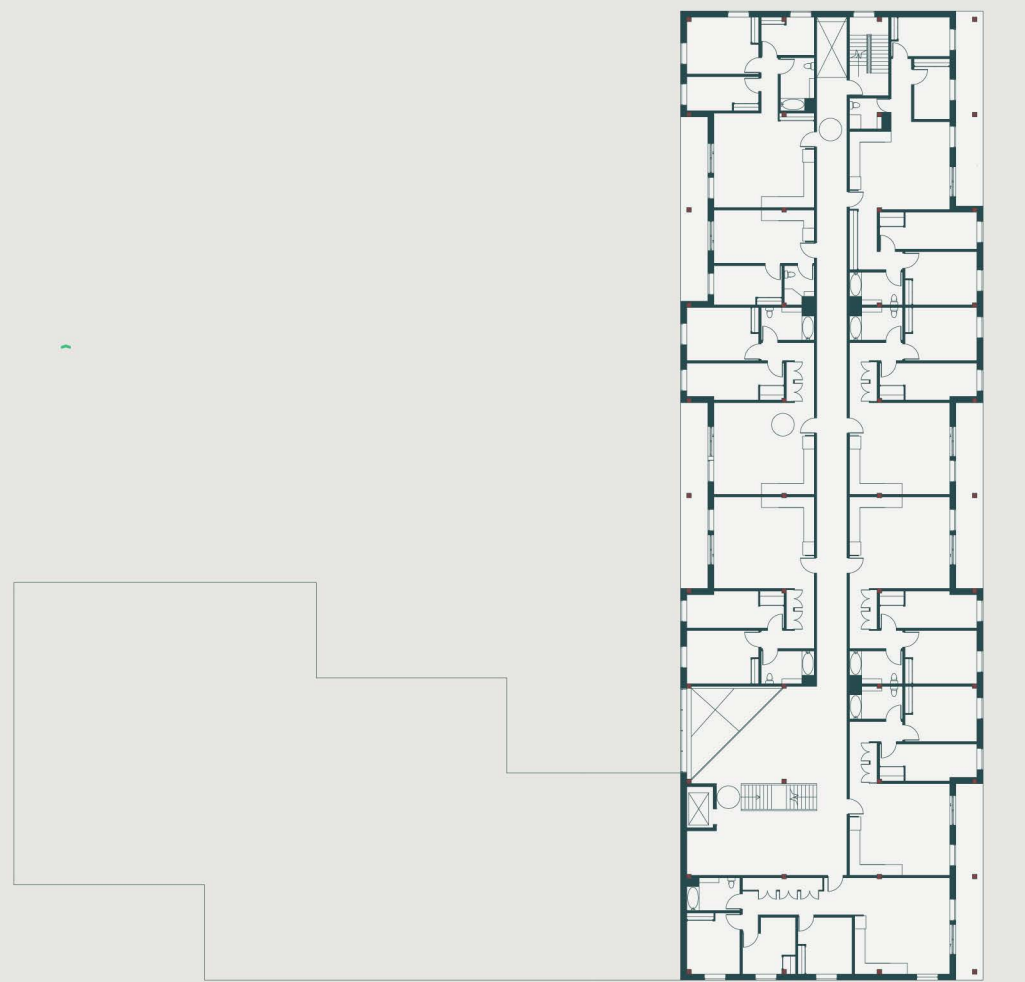
SOW
HARVEST

Top 2 languages spoken in Brampton

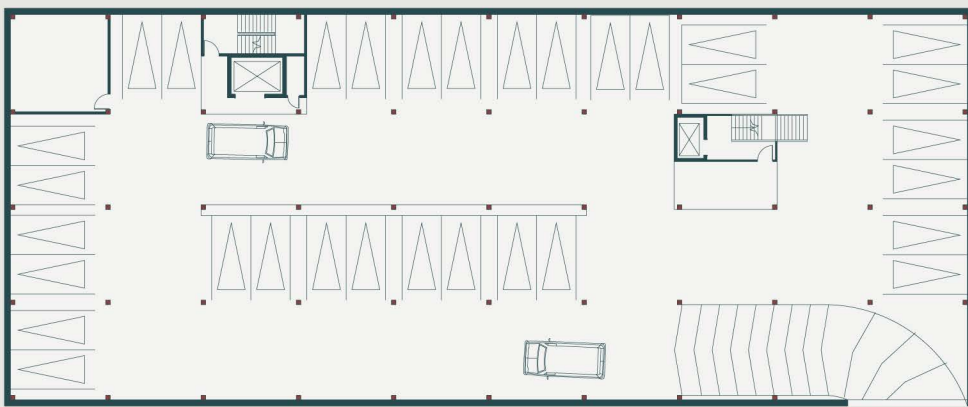
ENGLISH	PUNJABI	URDU
carrot	ਗੰਜਰ	دچاک
cauliflower	ਫੁੱਲ ਗੋਭੀ	یہب وگ
chili pepper	ਚੌਲੀ ਮਰਿਚ	چرم لال
onion	ਪਿਆਜ	زایپ
pepper	میرچ	چرم ی لاک
tomato	ਟماਟਰ	رٹامٹ



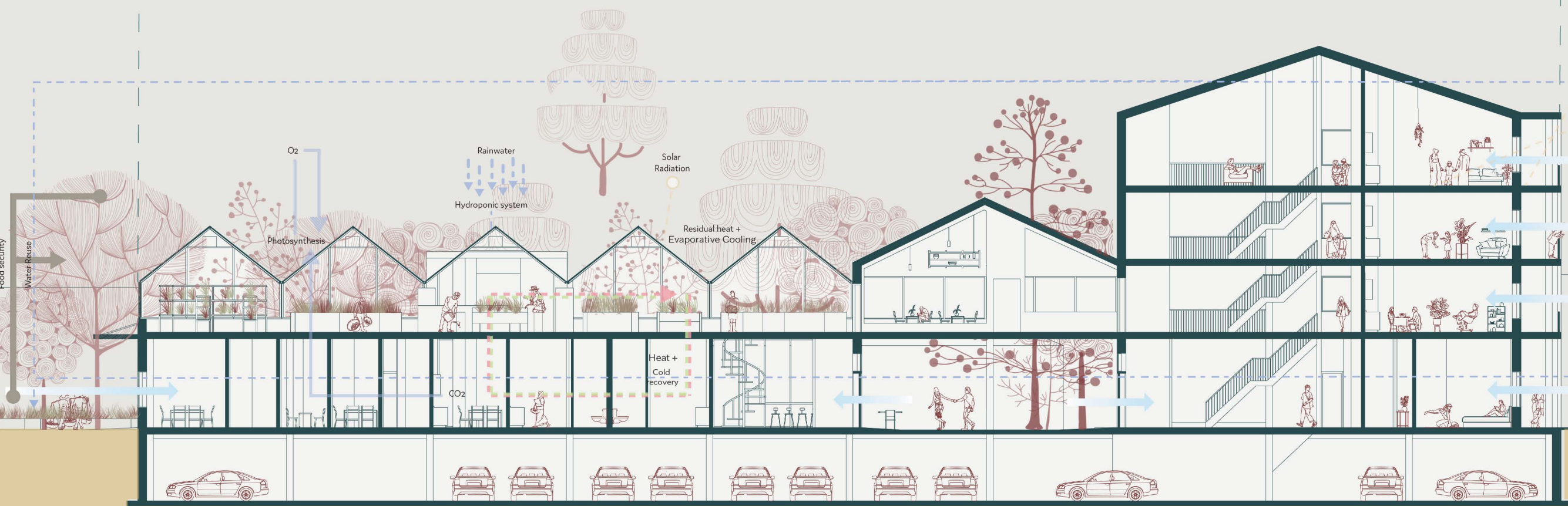
floor 2 plan
1:200



typical plan (floor 3 and 4)
1:500



below grade plan
1:500

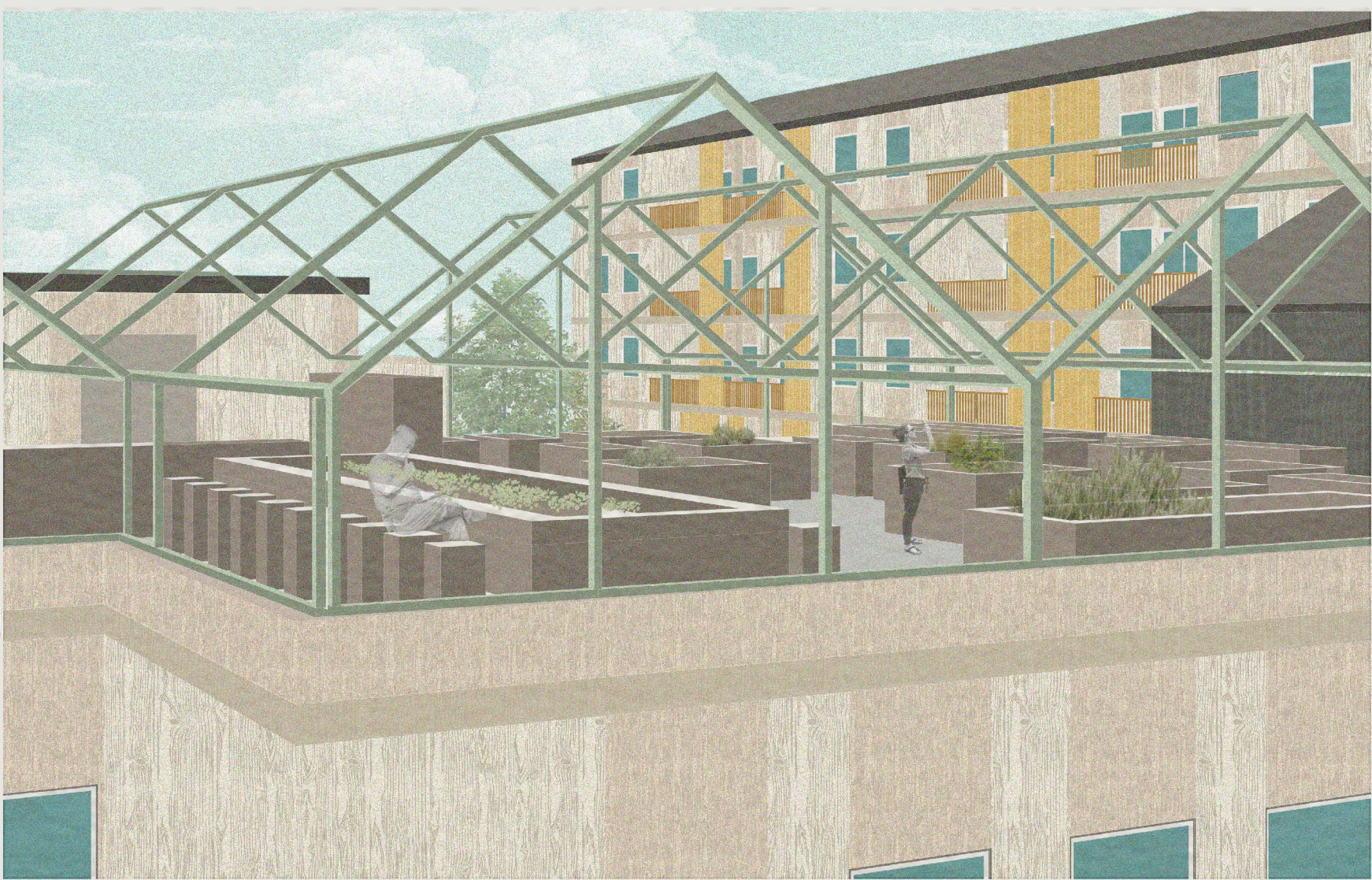


section AA
1:200

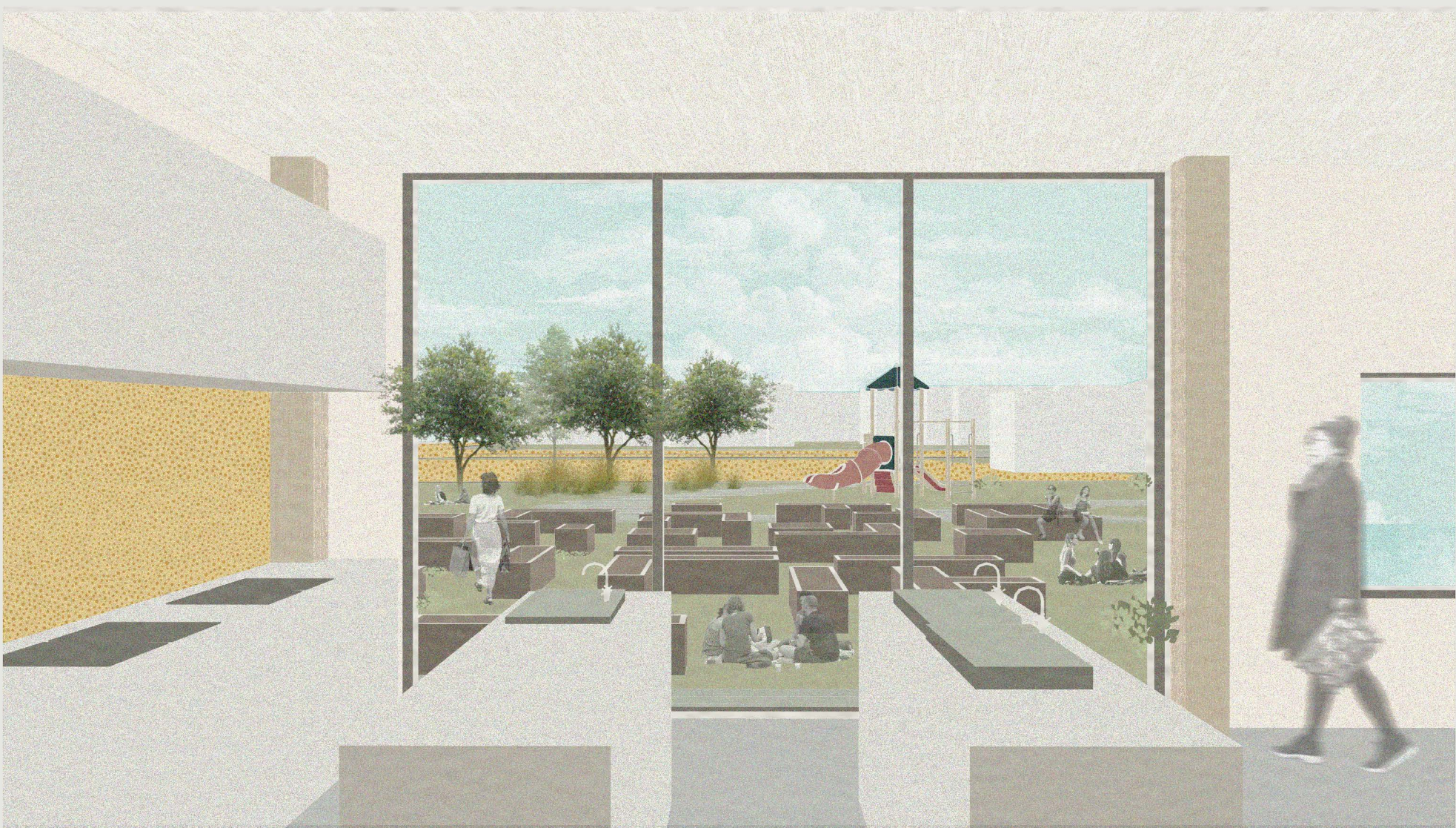
view from street



view of greenhouses



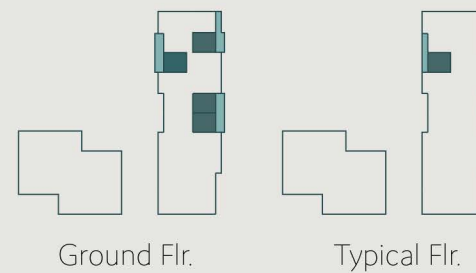
view from community kitchen



UNIT TYPE 1A

Area

40m square



Resident(s)

- Single
- Single Parent
- Young Couple
- Elderly Couple
- Mid-Size Family
- Multi-Generational

Duration of Stay

- Long Term (8+ Months)
- Short Term (4-8 Months)

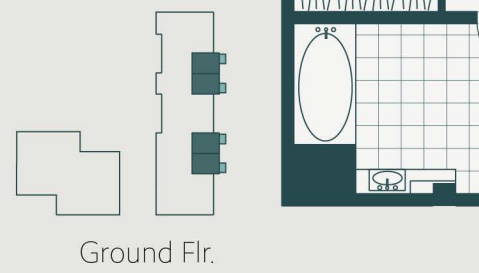
Universally Designed

- Accessible

UNIT TYPE 1B

Area

50m square



Resident(s)

- Single
- Single Parent
- Young Couple
- Elderly Couple
- Mid-Size Family
- Multi-Generational

Duration of Stay

- Long Term (8+ Months)
- Short Term (4-8 Months)

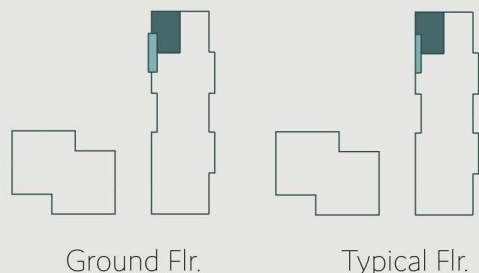
Universally Designed

- Accessible

UNIT TYPE 3A

Area

94m square



Resident(s)

- Single
- Single Parent
- Young Couple
- Elderly Couple
- Mid-Size Family
- Multi-Generational

Duration of Stay

- Long Term (8+ Months)
- Short Term (4-8 Months)

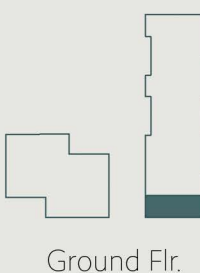
Universally Designed

- Accessible

UNIT TYPE 3B

Area

110m square



Resident(s)

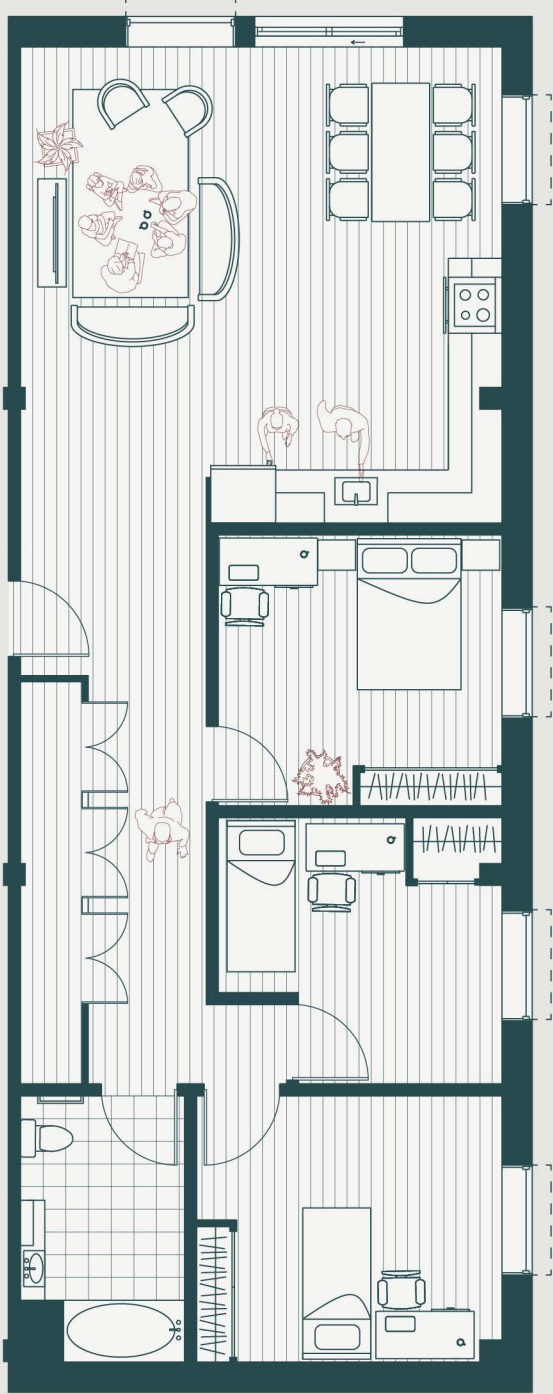
- Single
- Single Parent
- Young Couple
- Elderly Couple
- Mid-Size Family
- Multi-Generational

Duration of Stay

- Long Term (8+ Months)
- Short Term (4-8 Months)

Universally Designed

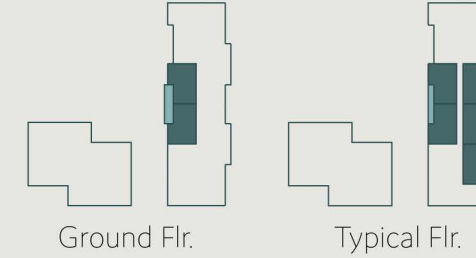
- Accessible



UNIT TYPE 2A

Area

92m square



Resident(s)

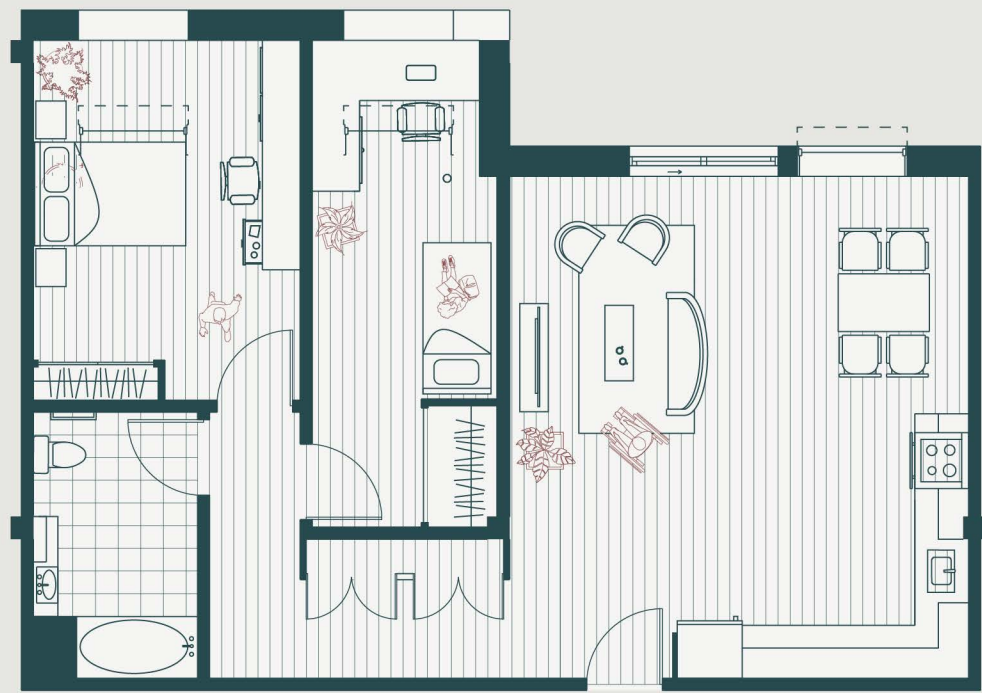
- Single
- Single Parent
- Young Couple
- Elderly Couple
- Mid-Size Family
- Multi-Generational

Duration of Stay

- Long Term (8+ Months)
- Short Term (4-8 Months)

Universally Designed

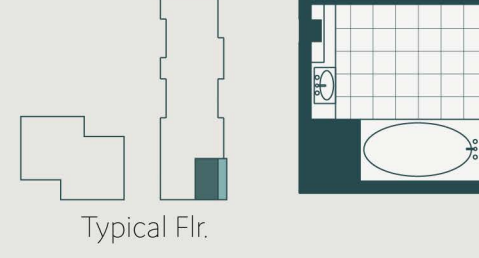
- Accessible



UNIT TYPE 2B

Area

84m square



Resident(s)

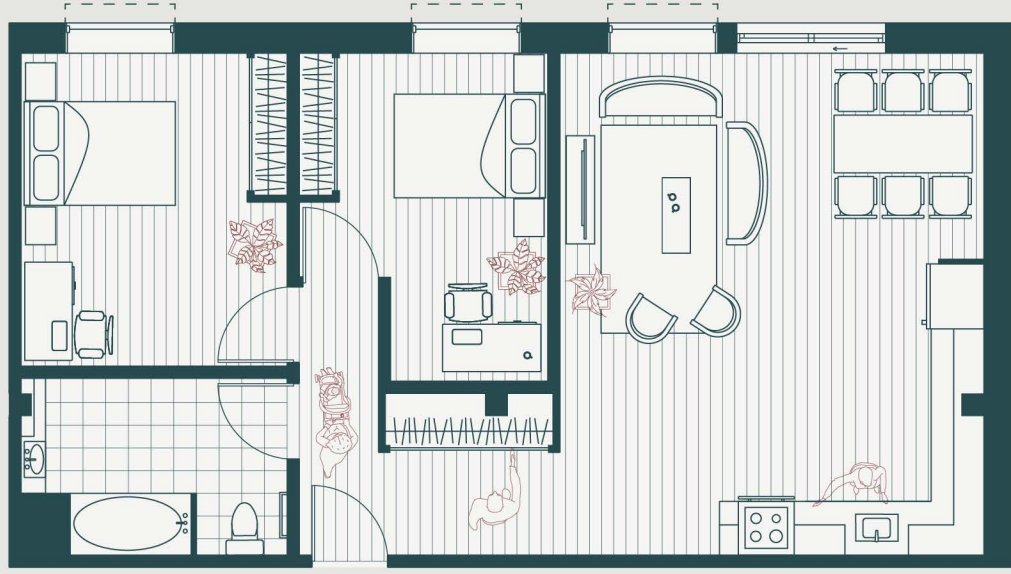
- Single
- Single Parent
- Young Couple
- Elderly Couple
- Mid-Size Family
- Multi-Generational

Duration of Stay

- Long Term (8+ Months)
- Short Term (4-8 Months)

Universally Designed

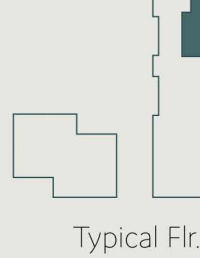
- Accessible



UNIT TYPE 4A

Area

122m square



Resident(s)

- Single
- Single Parent
- Young Couple
- Elderly Couple
- Mid-Size Family
- Multi-Generational

Duration of Stay

- Long Term (8+ Months)
- Short Term (4-8 Months)

Universally Designed

- Accessible

